



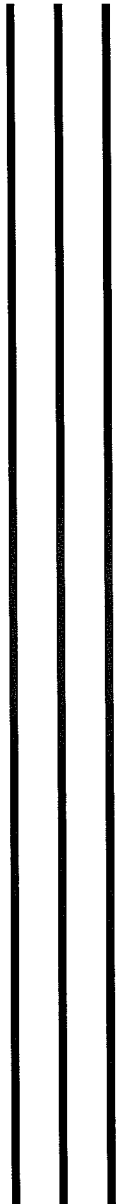
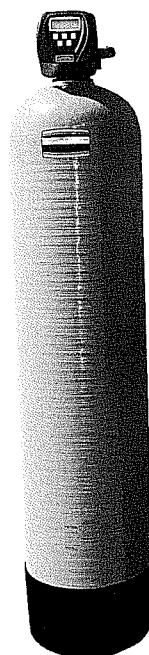
LANCASTER[®]

WATER TREATMENT

PROGRAMMING AND DRAWINGS MANUAL

COMMERCIAL ELECTRONIC WATER FILTER WITH THE WF15 VALVE

- 7-WF15-3
- 7-WF15-4
- 7-WF15-7
- 7-WF15-10



Congratulations on purchasing your new **Lancaster Water Filter**. This unit is designed to give you many years of trouble free service. When installed in accordance with the following instructions and if given reasonable care, clear-clean water will be the result. For servicing and future inspection purposes, please file this booklet with your important documents.



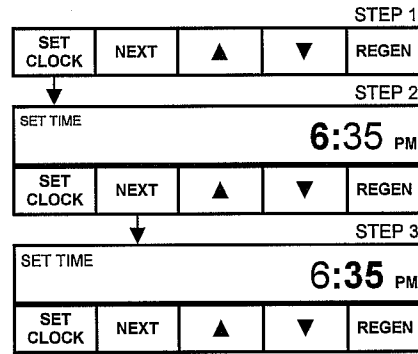
SET TIME OF DAY

STEP 1: Press **SET CLOCK**.

STEP 2: Set current hour of the day by pressing **▲** or **▼** buttons. AM/ PM toggles after 12.

STEP 3: Press **NEXT**. Set current minutes by pressing **▲** or **▼** buttons.

STEP 4: Press **NEXT** to exit **SET CLOCK**.



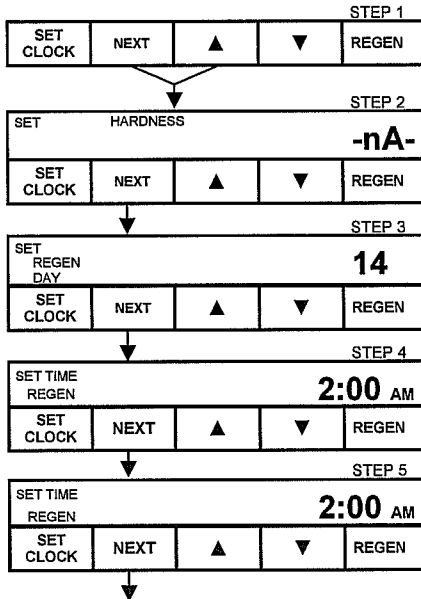
SET DAYS OVERRIDE & BACKWASH TIME

STEP 1: Press **NEXT** and **▲** simultaneously for 3 second

STEP 2: Press **NEXT**. Backwash day: This sets the maximum number of days between Backwashes. Set the maximum number of days between by pressing **▲** or **▼**. Range is 1– 28 days.

STEP 3: Press **NEXT**. Backwash time (hour): Set the hour of the day for Backwash to occur by using **▲** or **▼** buttons. AM/ PM toggles after 12. The default time is 2:00 am.

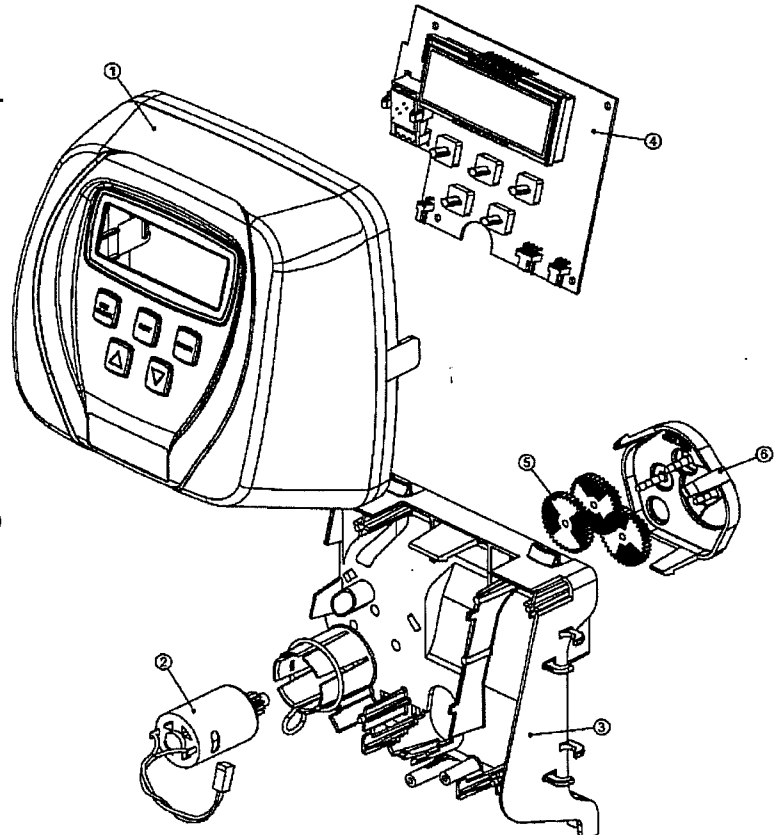
STEP 4: Press **NEXT**. Backwash time (minutes): Set the minutes of the day for regeneration by using **▲** or **▼** buttons. Press **NEXT** to exit Displays/Settings. Current time of day will be displayed.



ADDITIONAL PROGRAMMING INFORMATION AVAILABLE FROM LANCASTER WATER TREATMENT UPON REQUEST.

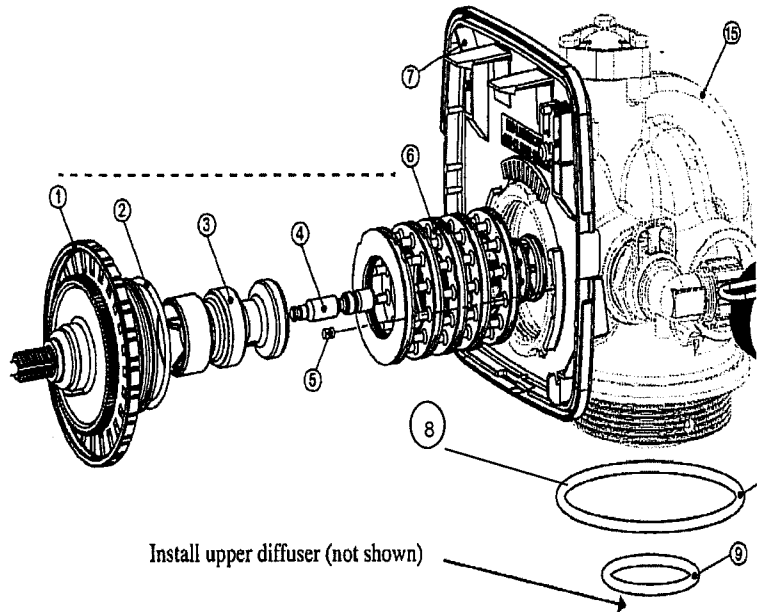
WS15 FRONT COVER AND DRIVE ASSEMBLY

Item No.	Quantity	Part No.	Description
1	1	V3175CC-01	Front Cover Assembly
2	1	V3107	Motor
3	1	V3106	Drive Bracket & Spring Clip
4	1	V3108CC-01	PC Board
5	3	V3110	Drive Gear 12 x 36
6	1	V3109	Drive Gear Cover
2 thru 6		V3002CC	Drive Assembly - (parts 2-6)
Not Shown	1	V3186	Transformer 110V-12V



Drive Cap Assembly, Downflow Piston, Regenerant Piston, Spacer Stack Assembly, Drive Back Plate, Main Body

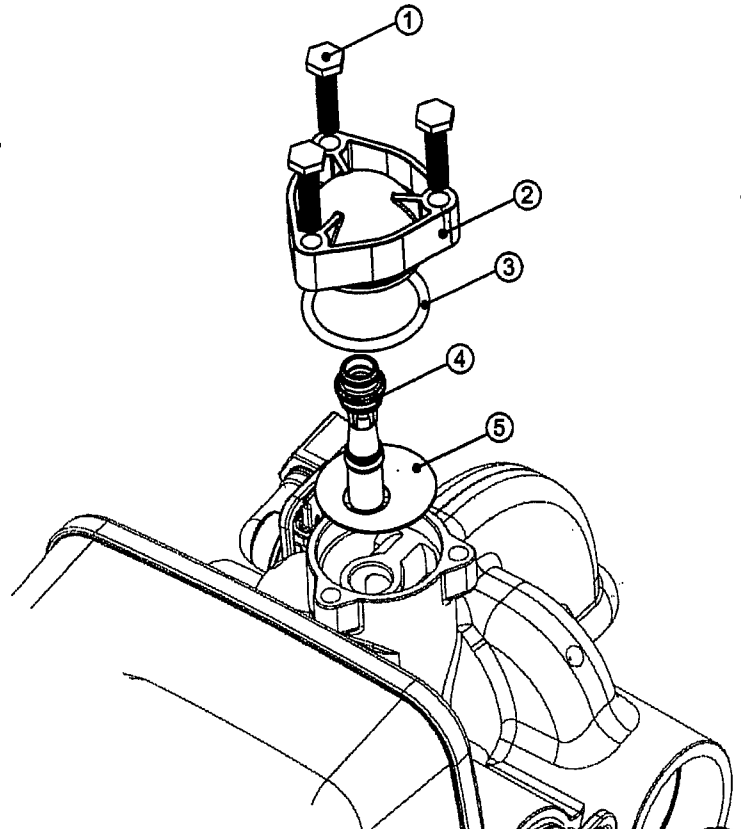
Drawing No.	Order No.	Description	Quantity
1	V3004	WS1 Drive Cap Asy	1
2	V3135	O-ring 228	1
3	V3407	WS1.5 Piston Downflow Asy	1
4	V3174*	WS1 Regenerant Piston	nA
5	V3423	WS1.5 Backplate Dowel	1
6	V3430	WS1.5 Spacer Stack Asy	1
7	V3178	WS1 Drive Back Plate	1
8	V3419	O-ring 347	1
9	V3418	O-ring 328 for valve bodies with NPT threads	1
Not Shown	V3437	WS1.5 Flow Straightener (located inside meter housing)	nA
10	V3401-01	WS1.5 Meter Housing	nA
11	V3223	WS2 Meter Clip	nA
12	V3003**	WS1 Meter Asy	nA
13	V3118-01	WS1 Turbine Asy	nA
14	V3105	O-ring	nA
15	V3400-01	WS1.5 Valve Body Downflow	nA



* V3174 WS1 Regenerant Piston not used for backwash only valves. V3010-15Z Injector Plug and V3195-01 WS Refill Port Plug ASY must be used for backwash only valves.

Injector Cap, Injector Screen, Injector, Plug, Bolts and O-Rings

Drawing No.	Order No.	Description	Quantity
1	V3422	Bolt	3
2	V3403	WS1.5 Injector Cap	1
3	V3417	O-ring 220	1
4	V3010-15Z	WS1.5 Injector Plug (filter)	1
5	V3404	WS1.5 Injector Screen	1
Not Shown	V3171	O-ring 013	*
Not Shown	V3416	O-ring 012	*

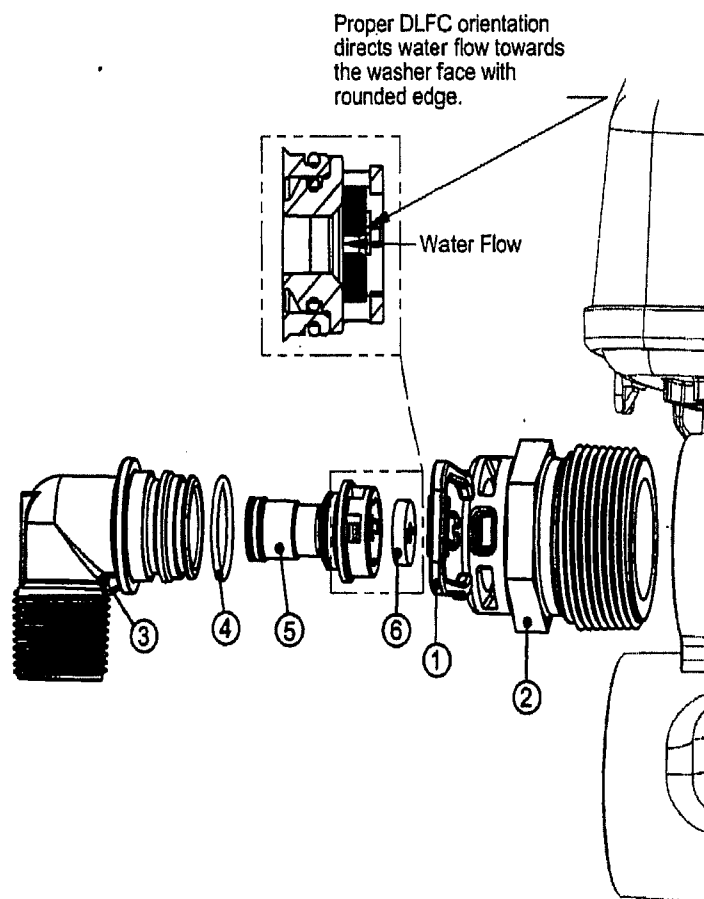


Valves are shipped without drain line flow control (DLFC)-install DLFC before using. Use a minimum drain line size of 3/4".

Drain line 3/4"

Drawing No.	Order No.	Description	Quantity
1	H4615	Locking Clip	1
2	V3414	WS1.5 DLFC Adapter	1
3	V3158-01	WS1 Drain Elbow 3/4" Male Asy	1
4	V3163	O-ring 019	1
5	V3159-01	WS1 DLFC Retainer Asy	1
6	V3162-032	WS1 DLFC 3.2 gpm for 3/4"	
	V3162-042	WS1 DLFC 4.2 gpm for 3/4"	
	V3162-053	WS1 DLFC 5.3 gpm for 3/4"	
	V3162-065	WS1 DLFC 6.5 gpm for 3/4"	
	V3162-075	WS1 DLFC 7.5 gpm for 3/4"	
	V3162-090	WS1 DLFC 9.0 gpm for 3/4"	
	V3162-100	WS1 DLFC 10.0 gpm for 3/4"	

One DLFC must be used if 3/4" fitting is used

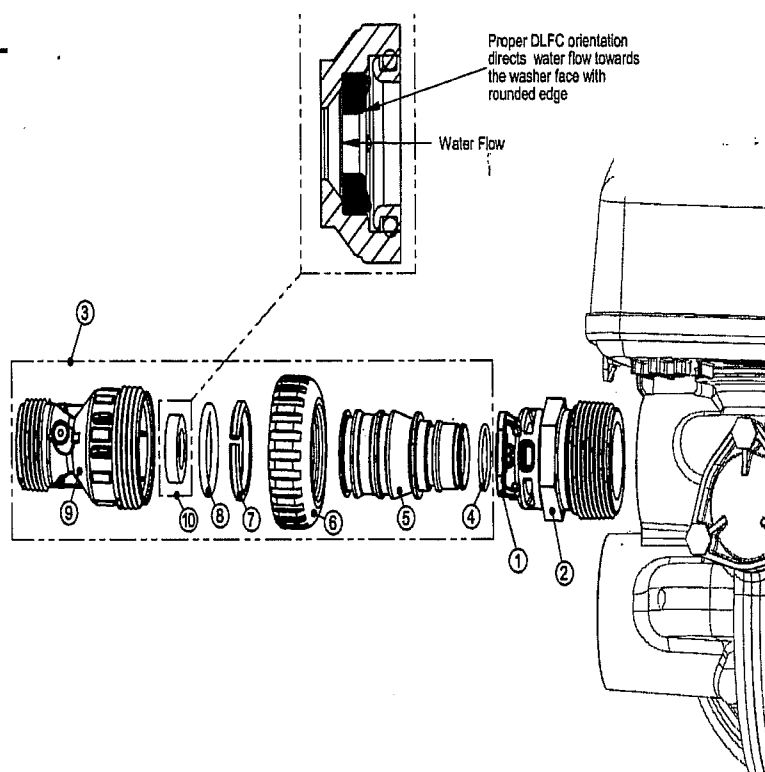


Vaies are shipped without drain line flow control (DLFC)-install DLFC before using.
Use a minimum drain line size of 3/4".

Drain Line 1"

Drawing No.	Order No.	Description	Quantity
1	H4615	Locking Clip	1
2	V3414	WS1.5 DLFC Adapter	1
3	V3008-02	WS1 Drain Ftg 1" Straight	1
4*	V3163	O-ring 019	1
5*	V3167	WS1 Drain Ftg Adapter 1"	1
6*	V3151	WS1 Nut 1"	1
7*	V3150	WS1 Split Ring	1
8*	V3105	O-ring 215	1
9*	V3166	WS1 Drain Ftg Body 1"	1
10	V3190-090	WS1 DLFC 9.0 gpm for 1"	
	V3190-100	WS1 DLFC 10.0 gpm for 1"	
	V3190-110	WS1 DLFC 11.0 gpm for 1"	
	V3190-130	WS1 DLFC 13.0 gpm for 1"	
	V3190-150	WS1 DLFC 15.0 gpm for 1"	
	V3190-170	WS1 DLFC 17.0 gpm for 1"	
	V3190-200	WS1 DLFC 20.0 gpm for 1"	
	V3190-250	WS1 DLFC 25.0 gpm for 1"	

One DLFC must be used if 1" fitting is used



*Can be ordered as a set, order number V3008-02 WS1 Drain Ftg 1" Straight